


## Wharf Repairs/Maintenance Updates:

### Day 30 – May 10<sup>th</sup>/2024

- Wx: Overcast, sunny periods, 2°C, Wind 10kts out of the NE (gusting to 16kts).
- Tool-Box-Talk @ 0700. In attendance: Trident workers (x 4) + Rick (LPHA).
- Continuing to mobilize equipment/gear/material to site. On-Going.
- Deploy work-rafts/small boat to do repairs on fender tires/chains/shackles.
- Remove old support steel guard at north end and install new one.
- Replace/install new portions of chaulks/whales/wheel-guards.
- Readyng tools/equipment/safety items. On-Going.

### Tool Box Meeting



**TRIDENT CONSTRUCTION**  
25 Dunbar Ave, Mount Pearl, NL, A1A 4R6  
 Phone: (709) 369-1100 FAX: (709) 369-8822

Date: May/10/24 Superintendent: Steve Project: Long Pond wharf

Topics / Task Being Reviewed: installing chaulks. Reinstalling tires.  
Painting of wheel guards.

Appropriate Tools Available: \_\_\_\_\_

Required PPE: \_\_\_\_\_

Job Procedure Reviewed (Title & #): \_\_\_\_\_

Safe Work Practice Reviewed (Title & #): working from A Raft

MSDS Reviewed: \_\_\_\_\_

Incidents/Accidents Reviewed: \_\_\_\_\_

Corrective Action / Worker Concern: \_\_\_\_\_

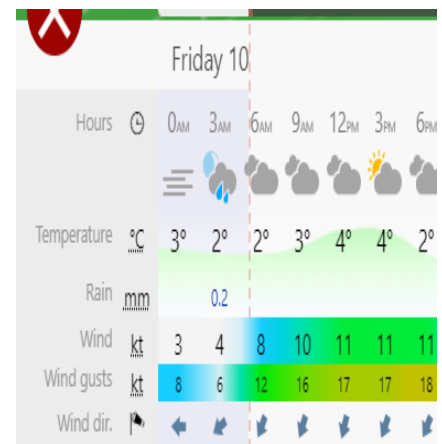
Notes: \_\_\_\_\_

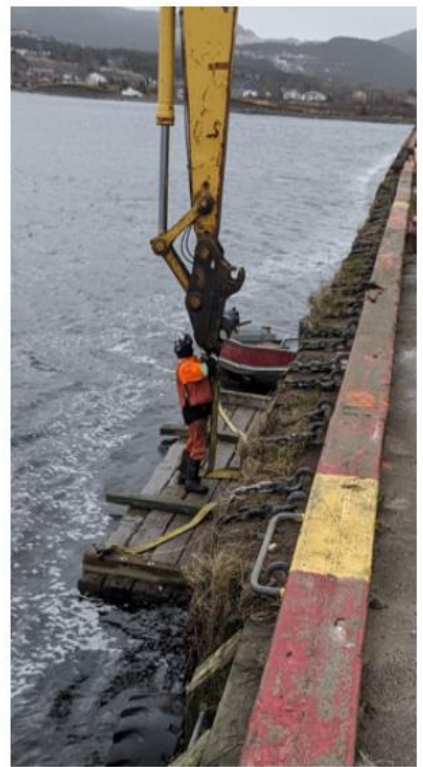
Superintendent's Signature: [Signature]

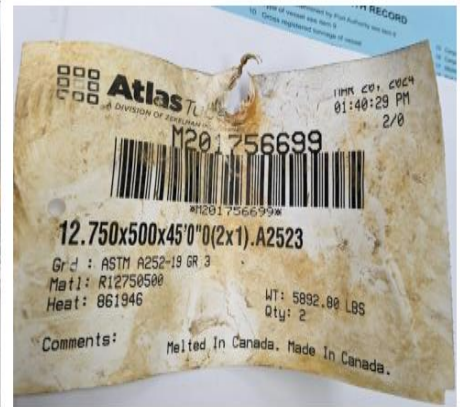
Employees Attending This Session

Justin Simmonds

Rick Wood LPHA     Pat Ryan     Brad Bradford





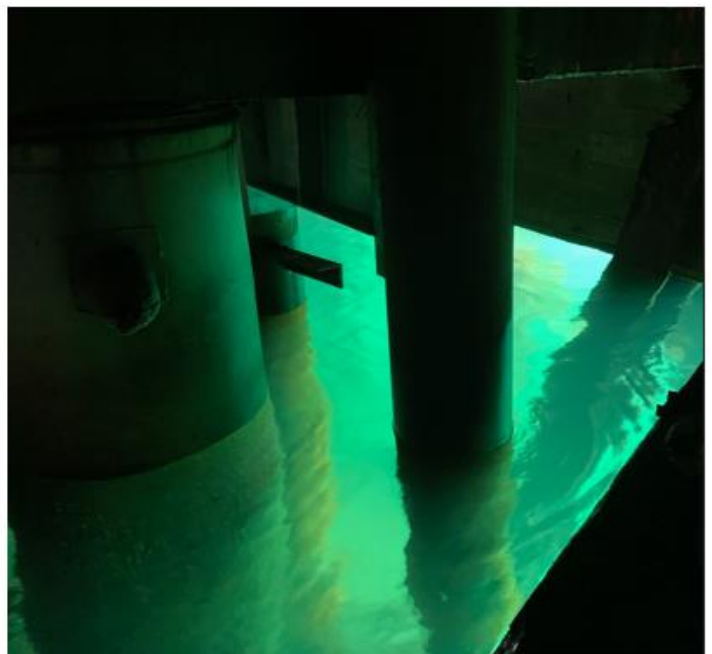






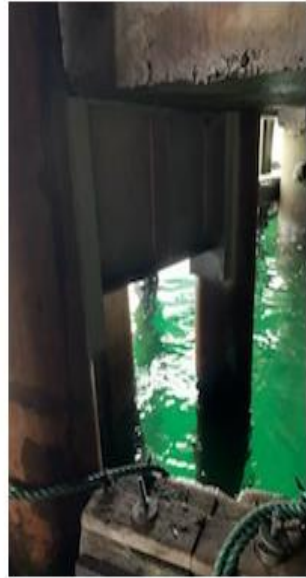
\*\*\* MILESTONE \*\*\*  
First Pile Drilled

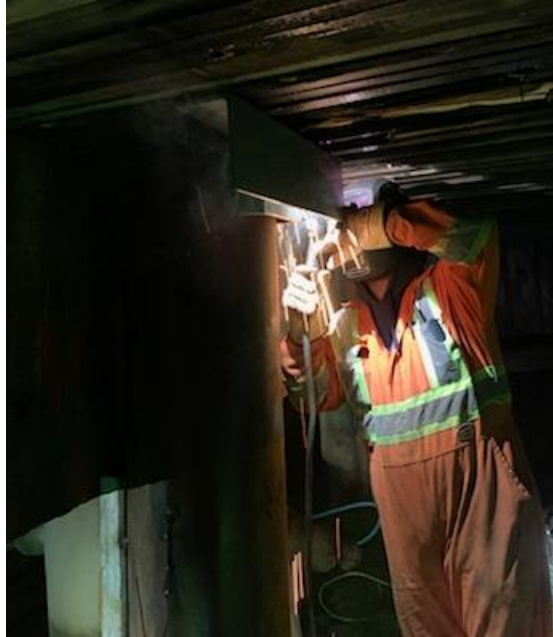


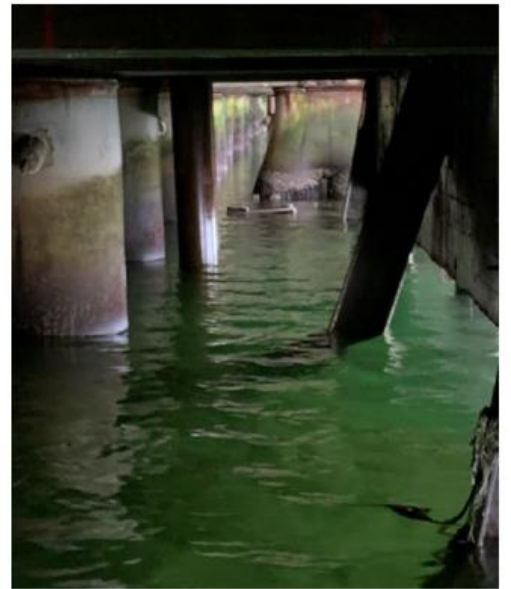
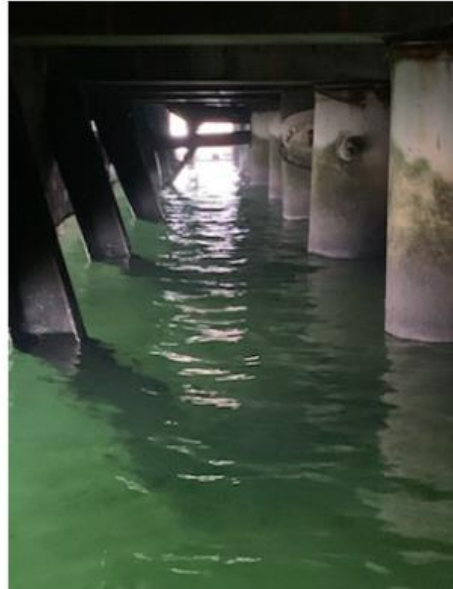




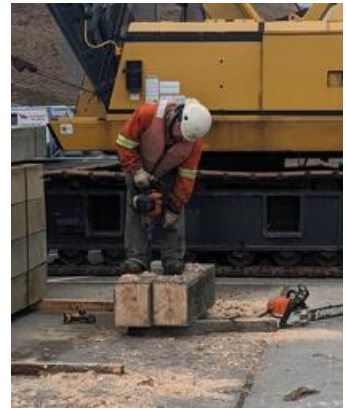


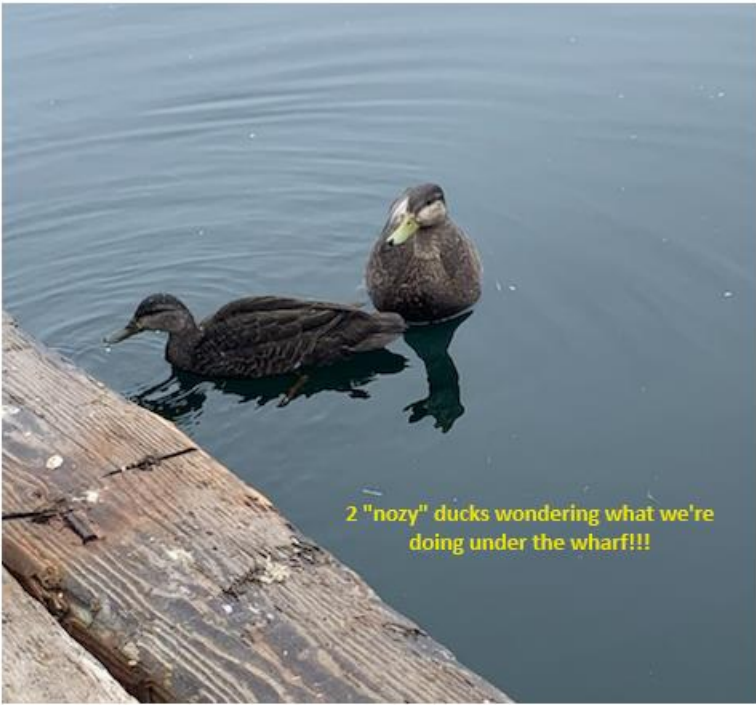






Timber material for wheel-guards/chaulks/bumper pads, received at Long Pond Wharf on May 7th/2024.





2 "nozy" ducks wondering what we're doing under the wharf!!!



"Trident Crew"

Brad  
"Goose"

Justin

Jim

Steve

Robin



2 "nozy" trainees!

